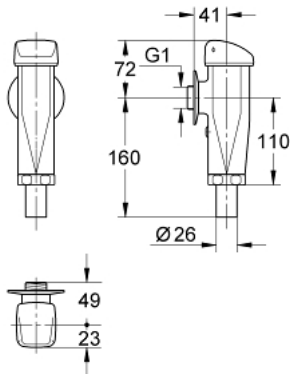


37 144 000 DALFLUX FLUSH VALVE FOR WC

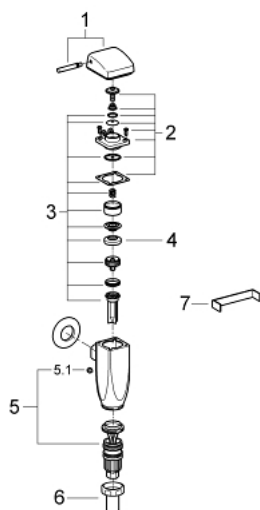


PRODUCT DESCRIPTION

- Colour: chrome
- (1")
- material: chrome plated brass
- heavy duty
- for low pressure
- without stop valve
- GROHE LongLife finish
- for wash-down and wash-out bowls
- with control cap and flush pipe connection
- with flow rate adjustment
- flush volume adjustable 7.0 - 13.0 l
- with escutcheon
- rubber connector with escutcheon
- flow pressure range from 0.5 - 4.0 bar (min. static pressure 1.5 bar)



37 144 000 DALFLUX FLUSH VALVE FOR WC



SPARE PARTS

- 1: Lever, complete (Spare part-nr. 43055000)
- 2: Cover (Spare part-nr. 43101000)
- 3: Set of seals (Spare part-nr. 43714000)
- 4: Sleeve (Spare part-nr. 4376900M)
- 5: Throttle nozzle (Spare part-nr. 43391000)
- 5.1: Screw (Spare part-nr. 43406000)
- 6: Discharge Sleeve (Spare part-nr. 43328000)
- 7: Throttle key (Spare part-nr. 43781000)