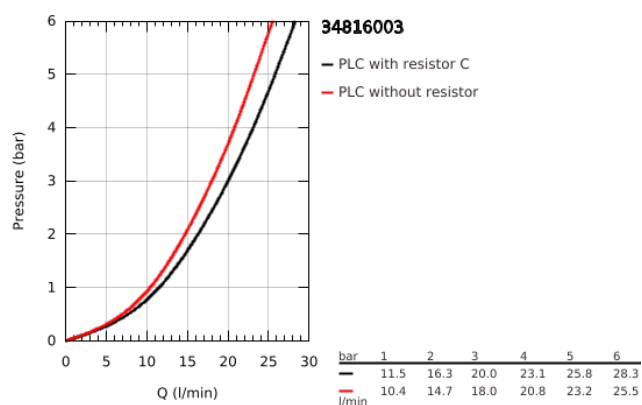
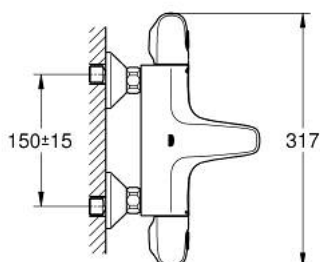


## 34 816 003 GROHTHERM 1000 BATH SAFETY MIXER



### PRODUCT DESCRIPTION (1/2)

- Colour: chrome
- wall mounted
- GROHE CoolTouch safety housing
- GROHE Long-Life finish
- GROHE MetalGrip ergonomically shaped metal handles
- GROHE SafeStop safety button at 38°C
- GROHE SafeStop Plus optional temperature limiter at 43°C included
- GROHE TurboStat compact cartridge
- integrated stop valve
- GROHE AquaDimmer Eco with multiple function:
  - integrated GROHE EcoButton
- flow control
- diverter: bath/shower
- shower bottom outlet 1/2"
- mousseur
- built-in non-return valves
- dirt strainers

Pure Freude  
an Wasser

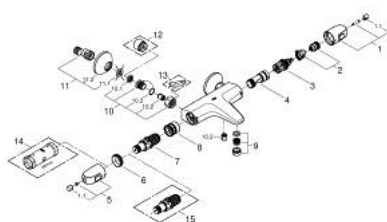


## 34 816 003 **GROHTHERM 1000 BATH SAFETY MIXER**

### **PRODUCT DESCRIPTION** (2/2)

- protected against backflow
- S-unions
- metal rosette
- GROHE Water Saving - Less water, perfect flow
- professional edition

## 34 816 003 GROHTHERM 1000 BATH SAFETY MIXER



### SPARE PARTS

- 1: Shut-off handle (Spare part-nr. 47976000)
- 1.1: Cover cap (Spare part-nr. 4797400M)
- 2: Stop (Spare part-nr. 47977000)
- 3: Aquadimmer (Spare part-nr. 12433000)
- 4: Water flow (Spare part-nr. 47751000)
- 5: Temperature control handle (Spare part-nr. 47973000)
- 5.1: Cover cap (Spare part-nr. 4797400M)
- 6: Fitting ring (Spare part-nr. 47743000)
- 7: Thermostatic compact cartridge 1/2" (Spare part-nr. 47439000)
- 8: Race (Spare part-nr. 47975000)
- 9: Mousseur (Spare part-nr. 13952000)
- 10: Non-return valve (Spare part-nr. 47189000)
- 10.1: Dirt strainer (Spare part-nr. 0726400M)
- 10.2: Non-return valve (Spare part-nr. 08565000)
- 10.3: O-ring  $\varnothing 17 \times \varnothing 2$  (Spare part-nr. 0305500M)
- 11: S-union (Spare part-nr. 12075000)
- 11.1: Seal (Spare part-nr. 0138600M)
- 11.2: Escutcheon (Spare part-nr. 0221000M)
- 12: Extension 3/4", 20 mm (Spare part-nr. 0713000M)\*
- 13: Special spanner (Spare part-nr. 19377000)\*
- 14: Socket Spanner (Spare part-nr. 19332000)\*
- 15: GROHE TurboStat cartridge 1/2" (Spare part-nr. 47175000)\*

\* Optional accessories