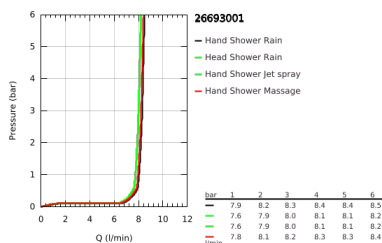
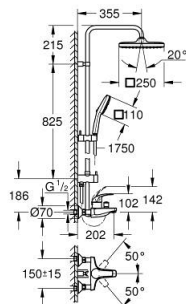


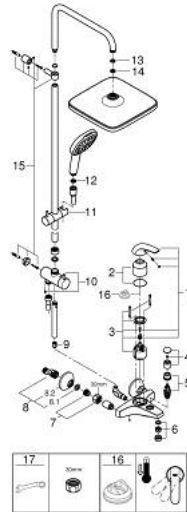
## 26 693 001 TEMPESTA SYSTEM 250 CUBE SHOWER SYSTEM WITH SINGLE LEVER BATH MIXER FOR WALL MOUNTING



### PRODUCT DESCRIPTION

- Colour: chrome
- with short shower rail for installation in showers
- consisting of:
  - horizontal 355 mm shower arm
  - exposed single-lever bath mixer with diverter handle
  - allows change between:
    - head shower Tempesta 250 Cube (26 685)
    - spray pattern: Rain
    - maximum flow rate (at 3 bar): 8 l/min
    - head shower with white rear cover
    - with ball joint, rotation angle  $\pm 10^\circ$
  - bath inlet
  - separate diverter for hand shower
  - hand shower Tempesta Cube 110 (27 574)
  - spray patterns: Rain, Jet, Massage
  - maximum flow rate (at 3 bar): 8.3 l/min
  - adjustable in height with gliding element
  - Rotaflex TwistStop shower hose 1750 mm 1/2" x 1/2" (28 410)
  - maximum flow rate system (at 3 bar): 8.3 l/min (without bath inlet)
  - GROHE EcoJoy - less water, perfect flow
  - GROHE SilkMove 46 mm ceramic cartridge
  - GROHE SmartSwitch - easily rotate the dial to enjoy your preferred spray option
  - GROHE DreamSpray - perfect spray pattern
  - ShockProof silicone ring prevents damages caused by shower falling
  - GROHE LongLife finish
  - GROHE SpeedClean - effortless limescale removal
  - Inner WaterGuide - inner insulation for surface protection
  - TwistStop - to prevent hose from twisting
  - suitable for instantaneous heaters from 18 kW/h
  - minimum flow rate 5 l/min.
  - minimum pressure 1.0 bar
  - professional edition

## 26 693 001 TEMPESTA SYSTEM 250 CUBE SHOWER SYSTEM WITH SINGLE LEVER BATH MIXER FOR WALL MOUNTING



### SPARE PARTS

- 1: Lever (Spare part-nr. 46700000)
- 2: Cap (Spare part-nr. 46578000)
- 3: Cartridge (Spare part-nr. 46048000)
- 4: Diverter knob (Spare part-nr. 46571000)
- 5: Diverter (Spare part-nr. 08915000)
- 6: Mousseur (Spare part-nr. 13952000)
- 7: Screw connection 1/2" (Spare part-nr. 45044000)
- 8: S-union (Spare part-nr. 12075000)
- 8.1: Seal (Spare part-nr. 0138600M)
- 8.2: Escutcheon (Spare part-nr. 0221000M)
- 9: Non-return valve (Spare part-nr. 08565000)
- 10: Diverter (Spare part-nr. 46877000)
- 11: Glider (Spare part-nr. 46876000)
- 12: Dirt strainer (Spare part-nr. 0700200M)
- 13: Fibre seal dia. Ø18.5 x Ø12 x 2 (Spare part-nr. 0138900M)
- 14: Dirt strainer (Spare part-nr. 48007000)
- 15: Mounting set (Spare part-nr. 46878000)
- 16: Temperature limiter (Spare part-nr. 46375000)\*
- 17: Special spanner (Spare part-nr. 19377000)\*

\* Optional accessories