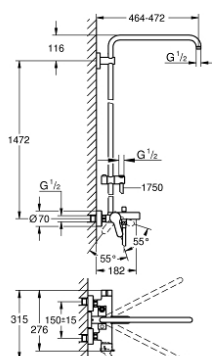
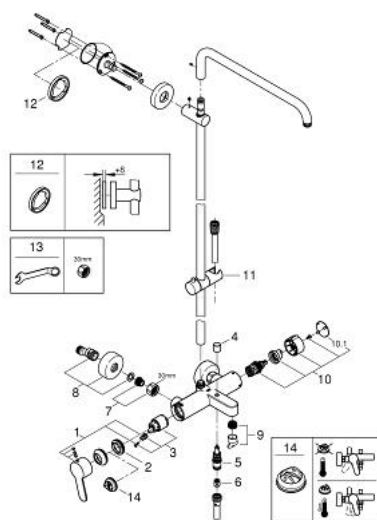


A sleek, modern shower system featuring a vertical chrome bar. At the top, a fixed overhead showerhead is mounted. A sliding rail allows for a handheld showerhead to be moved up and down the bar. At the base of the bar, there is a chrome-finished control valve with a single-lever handle and a diverter switch. A flexible hose is connected to the handheld showerhead. The entire unit is finished in a polished chrome.

- Colour: chrome
- horizontal swivable 450 mm shower arm
- exposed single-lever bath mixer with diverter handle
- separate diverter for hand shower
- gliding element
- Silverflex shower hose 1750 mm 1/2" x 1/2" (28 388)
- GROHE SilkMove 35 mm ceramic cartridge
- GROHE Long-Life finish
- Inner WaterGuide for a longer life
- TwistStop to prevent hose from twisting
- suitable for instantaneous heaters from 18 kW/h
- minimum flow rate 7 l/min.
- head and hand shower must be ordered separately



26 322 000 EUPHORIA SYSTEM SHOWER SYSTEM WITH SINGLE LEVER BATH MIXER FOR WALL MOUNTING



SPARE PARTS

- 1: Lever (Spare part-nr. 46750000)
- 2: Screw coupling (Spare part-nr. 46460000)
- 3: Cartridge (Spare part-nr. 46374000)
- 4: Diverter knob (Spare part-nr. 64309000)
- 5: Diverter (Spare part-nr. 65655000)
- 6: Non-return valve (Spare part-nr. 08565000)
- 7: Shank mounting kit (Spare part-nr. 45004000)
- 8: S-union (Spare part-nr. 12662000)
- 9: Mousseur (Spare part-nr. 13926000)
- 10: Diverter (Spare part-nr. 46921000)
- 10.1: Cover cap (Spare part-nr. 4788300M)
- 11: Glider (Spare part-nr. 12140000)
- 12: Compensation disc (Spare part-nr. 27180000)*
- 13: Special spanner (Spare part-nr. 19377000)*
- 14: Temperature limiter (Spare part-nr. 46375000)*
- * Optional accessories