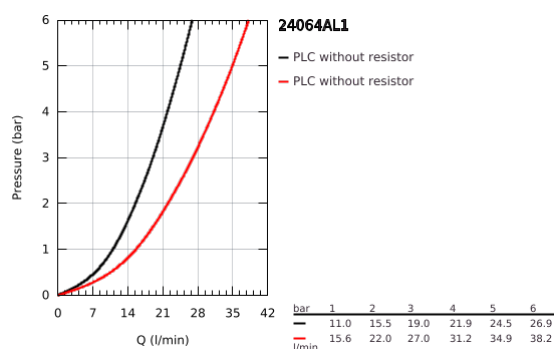
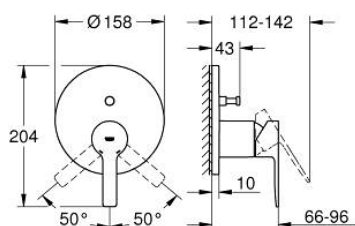


24 064 AL1 LINEARE SINGLE-LEVER MIXER WITH 2-WAY DIVERTER

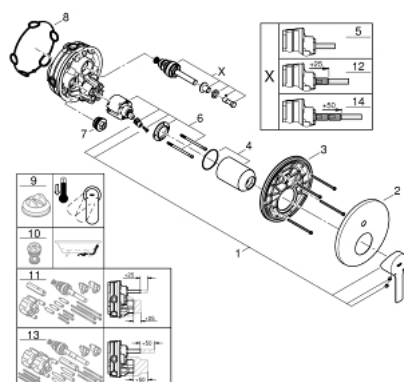


PRODUCT DESCRIPTION

- Colour: brushed hard graphite
- final installation for
- GROHE Rapido SmartBox (35 604)
- GROHE SilkMove 46 mm ceramic cartridge
- GROHE Long-Life finish
- GROHE FastFixation escutcheon with covered shaft sealing and covered fixing
- metal escutcheon, retroactively 6° adjustable
- metal lever
- automatic 2-way diverter
- flow performance: outlet B = 27 l/min, outlet C = 27 l/min
- without roughing-in-set



24 064 AL1 LINEARE SINGLE-LEVER MIXER WITH 2-WAY DIVERTER



SPARE PARTS

- 1: Lever (Spare part-nr. 46988AL0)
 - 2: Escutcheon (Spare part-nr. 48429AL0)
 - 3: Mounting plate (Spare part-nr. 48440000)
 - 4: Cap (Spare part-nr. 09038AL0)
 - 5: Diverter (Spare part-nr. 48442AL0)
 - 6: Cartridge (Spare part-nr. 46048000)
 - 7: Non-return valve (Spare part-nr. 49085000)
 - 8: Seal (Spare part-nr. 48360000)
 - 9: Temperature limiter (Spare part-nr. 46375000)*
 - 10: Backflow protection combination (Spare part-nr. 14055000)*
 - 11: Universal extension set single-lever mixers, 25 mm (Spare part-nr. 14056000)*
 - 12: Diverter (Spare part-nr. 48444AL0)*
 - 13: Universal extension set single-lever mixers, 50 mm (Spare part-nr. 14057000)*
 - 14: Diverter (Spare part-nr. 48445AL0)*
- * Optional accessories